

# BOGMAT HX

## Heavy Duty Ground Protection Mats

BOGMAT HX are used to protect sensitive ground from vehicle tyres/treads and to prevent vehicles from getting stuck in soft ground. Each mat is 2300x1100mm with hex-tread traction on both sides; one side provides grip to the tyres, while the other side grips the ground.

They are moulded from a special grade of UV-stabilised virgin polyethylene resin which is designed for long outdoor life. This material highly durable while remaining flexible enough to grip the tyres of a heavy truck without breaking.



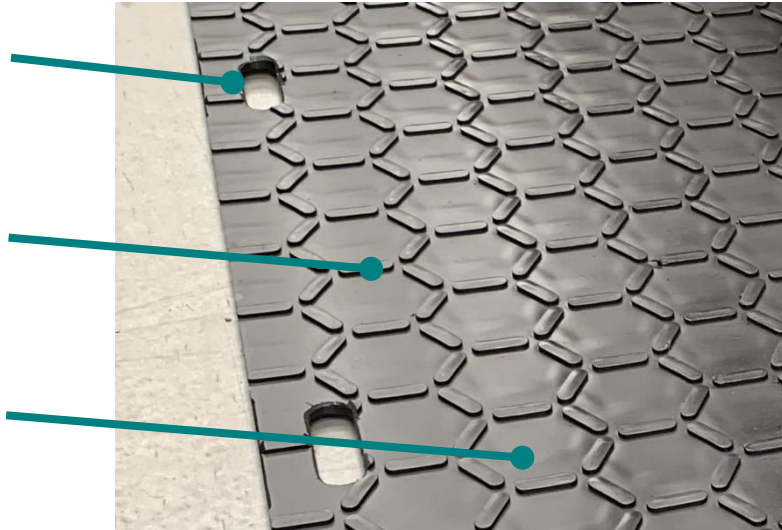
### Specifications:

Dimensions:	2300mm x 1100mm
Thickness:	12mm plus 3mm traction nubs on both sides (18mm total)
Weight:	36kg
Material:	UV-stabilised virgin high-density polyethylene (HDPE)
Colour:	Black
Capacity:	Up to 60 tonnes on firm, flat ground (load capacity varies depending on ground conditions)
Traction:	Non-slip hex-shaped traction pattern on both sides
Handholds:	4 easy carry handholds
Origin:	Imported

Easy carry handles allow BOGMAT HX to be moved quickly and safely

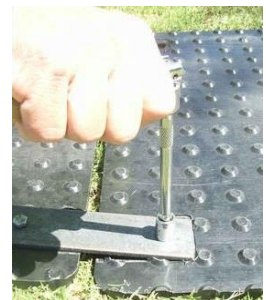
Hex-tread traction pattern grips vehicle tyres and prevents mats from sliding on the ground

BOGMAT HX is made from virgin HDPE which has been UV-stabilised for long term outdoor use



### Connectors:

BOGMAT connectors attach at the corner holes to hold mats together and prevent them from slipping or moving around under turning vehicles. Our connectors are made from stainless steel in 2-way or 4-way configuration.



### Applications:

- ✓ Construction works
- ✓ Infrastructure maintenance
- ✓ Golf courses and sports fields
- ✓ Parks and gardens
- ✓ Landscaping
- ✓ Eco-sensitive areas
- ✓ All-terrain access

### Benefits:

- ✓ Low profile traction pattern
- ✓ Non-slip surface
- ✓ Relatively light and safe to handle
- ✓ Long lasting outdoor use
- ✓ Easy to clean
- ✓ Protect ground from damage
- ✓ Prevent bogged vehicles

**GROUND PROTECTION**

Ground Protection Pty Ltd  
PO Box 118 St Leonards NSW 1590  
Ph: 1300 730 700  
Email: [sales@trakmat.com.au](mailto:sales@trakmat.com.au)